

MEGAFORCE

The Stage Company

TVG-I





The TVG-I is a classic open air festival tower stage. The stage delivers above-average load capacity, outstanding clearance heights, spacious performance areas, as well as numerous, extensive and variable accessory attachments – in short, the TVG-I is designed to meet virtually every requirement. The performance area is adjustable from 20-26 meters in width and 13-15 meters in depth. The system can hold up to 45 tons in total and is engineered to the maximum technical requirements possible for a portable structure. It provides an optimum wind and weather protection through the use of covered side wings, which extend across the overall 50-meter width. Variable additions such as PA wings, LED portals, loading docks and ramps are just some of the many options available. The TVG-I delivers superior engineering, installation flexibility and cost-effective suitability for every organizer and event.

MEGAFORCE

The Stage Company

Stage: TVG I 22x15m – 8W – 10T

Stage built on a Layher AR base with 10 towers.

Roof and side skin made from black PVC.

Stage floor built with resin coated and shatterproof plywood decks.

Performance area:	23,83 m x 14,50 m
Wings:	8,13 m x 14,19 m
Total height of stage:	16,69 m
Total area of stage:	40,40 m x 14,50 m (+ ramps and loading dock)
Height of podium:	2,00 m / 2,50m
Clearance with stage floor @2,30m:	14,20m

Rigging capacity

Roof:	25,00to (with spread load up to 35to)
Per wing:	8,9to
Per outrigger:	2,5to

Also included:

2 stage ramps, 2 stage staircases,
construction light, loading dock



Operational costs:

Transport volume: 6 trailers
Build-up days: 3
Dismantling days: 1,5
Construction machines: forklifts, crane

Build-up day 1

	Quantity	Hours (at least)	Total hours	Notice
Headcrew	4	10	40	
Scaffolder	8	10	80	equipped with tool kit and helmet, must have 16m climbing licence, according to the Professional Association's Institute for Industrial Safety
Steelhands	8	10	80	equipped with tool kit and helmet, must have a 2,5m climbing licence according to Professional Association's Institute for Industrial Safety
Forklift incl. operators	3	10	30	Lifting capacity at least 4to Operating height at least 4m
Crane incl. operators	1	5	5	Lifting capacity at least 80to Operating height at least 20m

Build-up day 2

	Quantity	Hours (at least)	Total hours	Notice
Headcrew	4	10	40	
Scaffolder	8	10	80	equipped with tool kit and helmet, must have 16m climbing licence, according to the Professional Association's Institute for Industrial Safety
Steelhands	8	10	80	equipped with tool kit and helmet, must have a 2,5m climbing licence according to Professional Association's Institute for Industrial Safety
Forklift incl. operators	2	10	20	Lifting capacity at least 4to Operating height at least 4m

MEGAFORCE

The Stage Company

Build-up day 3

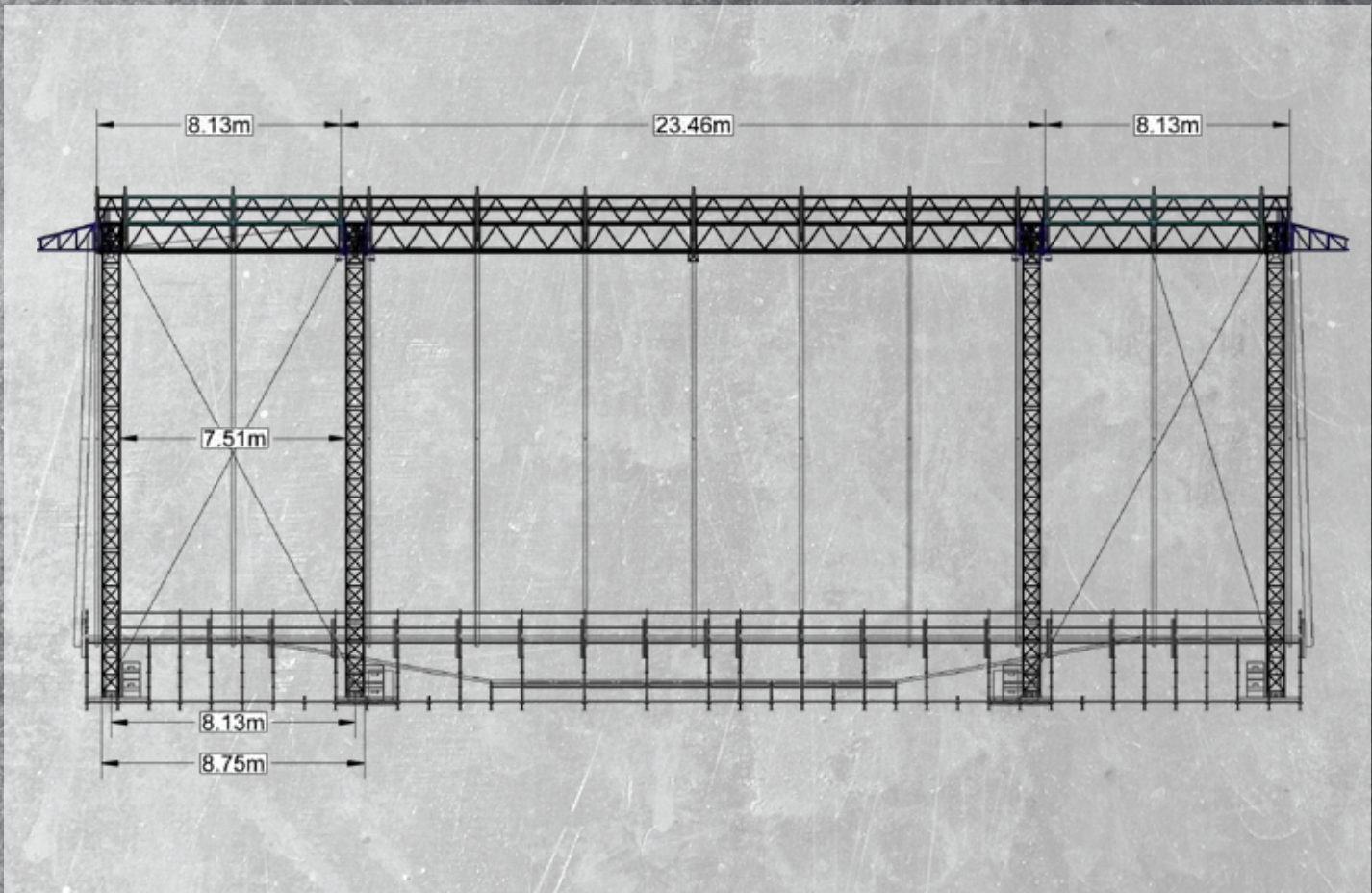
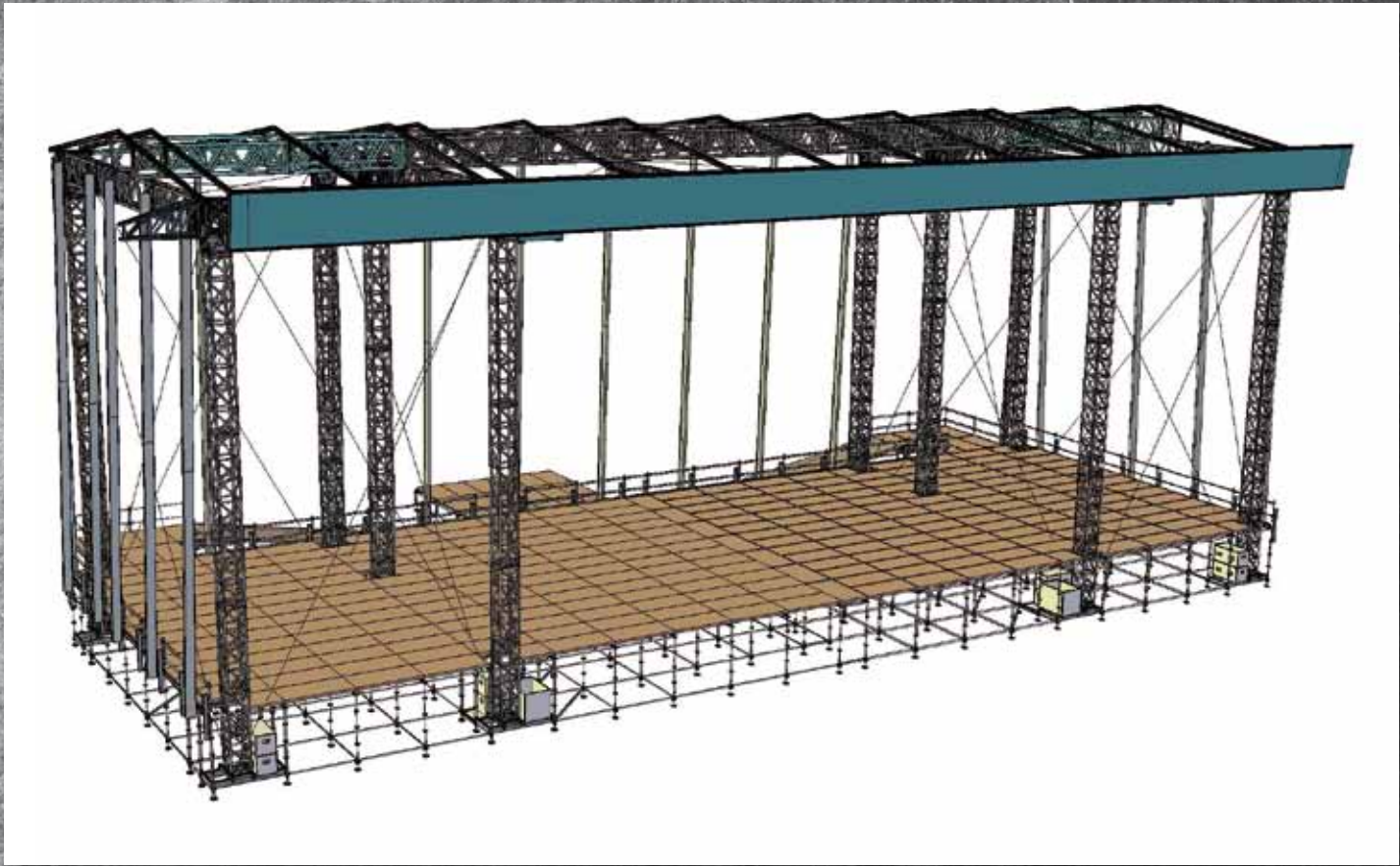
	Quantity	Hours (at least)	Total hours	Notice
Headcrew	4	10	40	
Scaffolder	8	5	40	equipped with tool kit and helmet, must have 16m climbing licence, according to the Professional Association's Institute for Industrial Safety
Steelhands	8	5	40	equipped with tool kit and helmet, must have a 2,5m climbing licence according to Professional Association's Institute for Industrial Safety
Forklift incl. operators	3	10	30	Lifting capacity at least 4to Operating height at least 4m

Dismantling day 1

	Quantity	Hours (at least)	Total hours	Notice
Headcrew	4	10	40	
Scaffolder	8	10	80	equipped with tool kit and helmet, must have 16m climbing licence, according to the Professional Association's Institute for Industrial Safety
Steelhands	8	10	80	equipped with tool kit and helmet, must have a 2,5m climbing licence according to Professional Association's Institute for Industrial Safety
Forklift incl. operators	3	10	30	Lifting capacity at least 4to Operating height at least 4m
Crane incl. operators	1	5	5	Lifting capacity at least 80to Operating height at least 20m

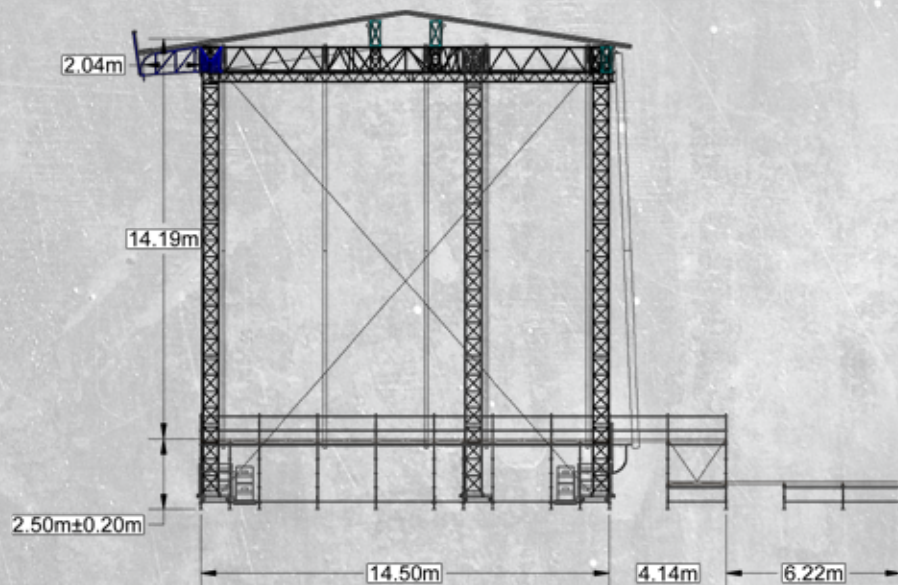
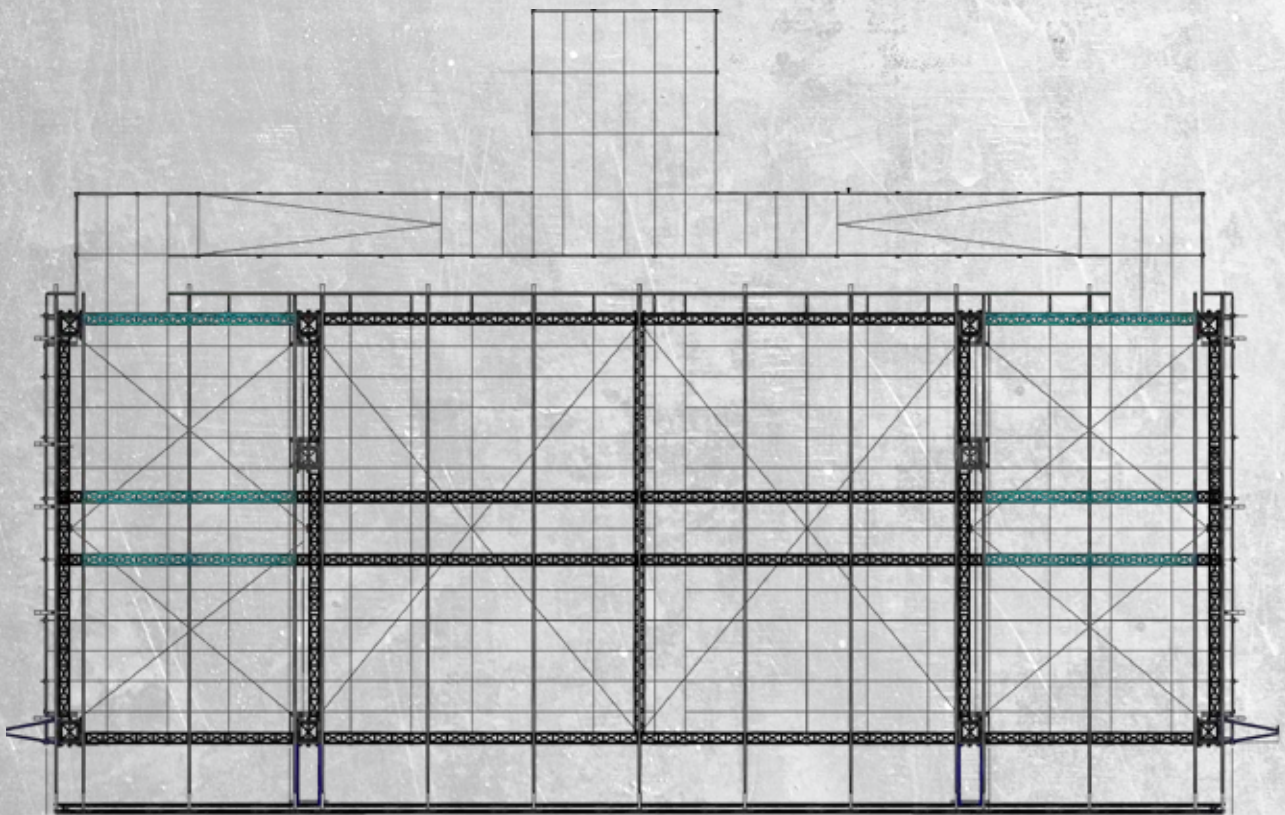
Dismantling day 2

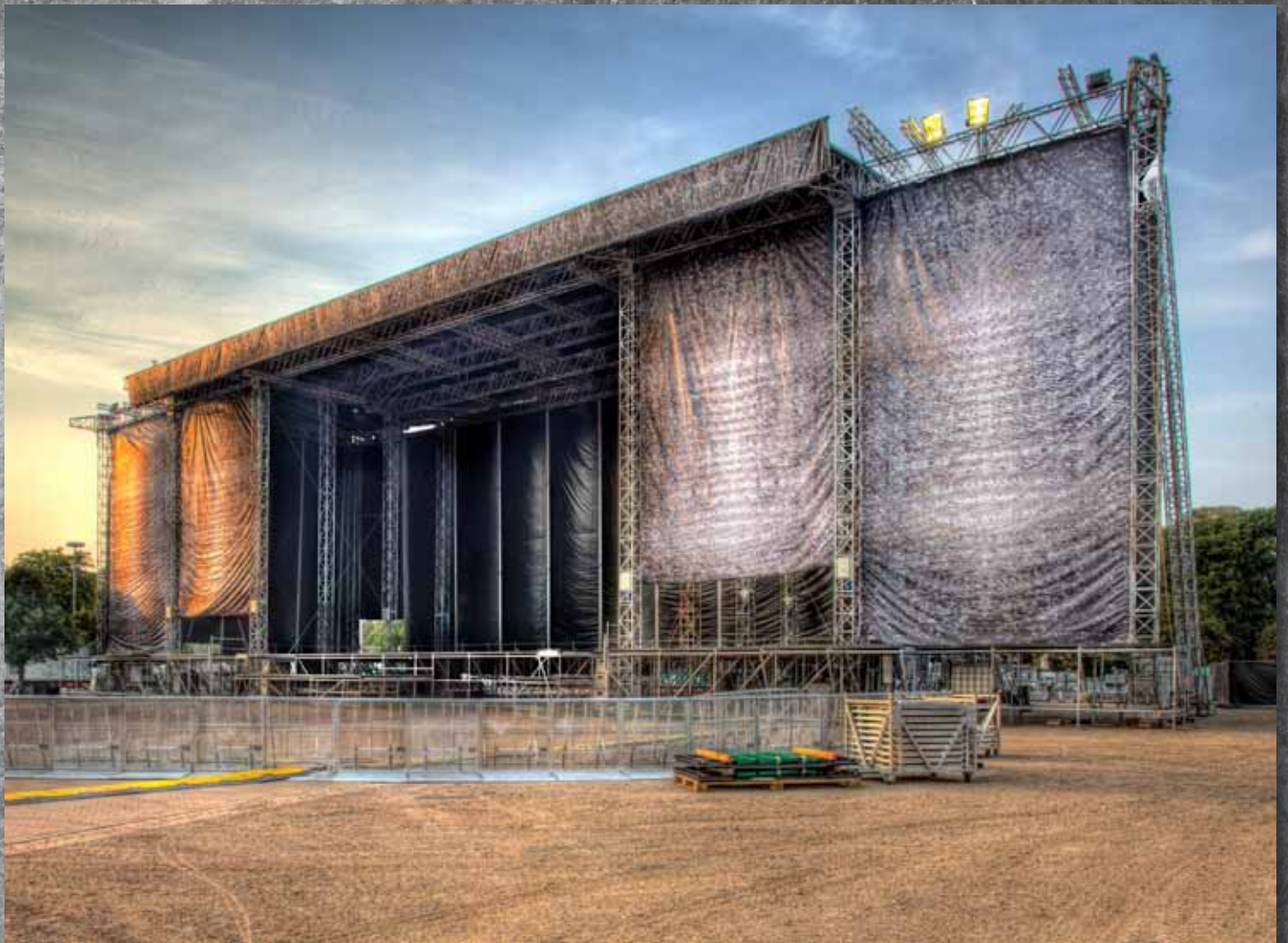
	Quantity	Hours (at least)	Total hours	Notice
Headcrew	4	10	40	
Scaffolder	0	0	0	equipped with tool kit and helmet, must have 16m climbing licence, according to the Professional Association's Institute for Industrial Safety
Steelhands	8	5	40	equipped with tool kit and helmet, must have a 2,5m climbing licence according to Professional Association's Institute for Industrial Safety
Forklift incl. operators	3	8	24	Lifting capacity at least 4to Operating height at least 4m



MEGAFORCE

The Stage Company





Interested? Give us a call!

MEGAFORCE

The Stage Company

MEGAFORCE Bühnen- und Veranstaltungstechnik

Jöhlinger Straße 118

D – 76356 Weingarten

Tel.: 0049 - 7244 - 72 02 0

Fax: 0049 - 7244 - 72 02 22

info@megaforce.de

[WWW.MEGAFORCE.DE]

