

# MEGAFORCE

The Stage Company

## TVG-R28

### "FAT LADY"







Our largest stage system to-date, the R28 'fat Lady' is one of the most extraordinary stages in Europe. This truly massive tower stage with its recognizable arched roof is an exceptional in-house creation of MEGAFORCE GmbH (Germany) and is an evidence for superior engineering. It is also one of the most efficient and economical systems, that has ever been created for large-venue applications. Designed to accommodate the biggest and most demanding global productions, the 'fat Lady' sets a new industry benchmark for stage size, roof capacity, and installation flexibility.

This massive structure delivers a total width of approximately 27 meters (88.5ft) with a roof load capacity from 45 to 65 tons overall. The amazingly robust stage design comes with the ability to integrate additional LED walls in sizes up to approx. 400 square meters (4.300 square feett), which deliver truly breathtaking performance areas. The 'fat Lady' is your obvious and perfect choice for the largest events of any kind.



# MEGAFORCE

The Stage Company

Stage built on a Layher AR base with 8 towers.

Roof and side skin made from black PVC.

Stage floor built with resin coated and shatterproof plywood decks.

Performance area:	26,93 m x 14,50 m
Wings:	9,36 m x 16,16 m
Total height of stage:	21,00m approx.
Total area of stage:	47,30 m x 14,50 m + loading dock
Height of podium:	2,00 m / 2,50m
Clearance with stage floor @2,30m:	17,16 m (center stage); 16,15 m (stage left & stage right)

## Rigging capacity

Roof:	30,00to (with spread load up to 45to)
Per wing:	8,00to
Per outrigger:	3,8to

## Also included:

2 stage ramps, 2 stage staircases,  
construction light, loading dock





## Operational costs:

Transport volume: 11 trailers  
Build-up days: 3  
Dismantling days: 2  
Construction machines: forklifts, crane

### Build-up day 1

	Quantity	Notice
Headcrew	6	
Scaffolder	10	equipped with tool kit and helmet, must have 16m climbing licence, according to the Professional Association's Institute for Industrial Safety
Steelhands	10	equipped with tool kit and helmet, must have a 2,5m climbing licence according to Professional Association's Institute for Industrial Safety
Forklift incl. operators	3	Lifting capacity at least 4to Operating height at least 4m
Crane incl. operators	1	Lifting capacity at least 80to Operating height at least 20m

### Build-up day 2

	Quantity	Notice
Headcrew	6	
Scaffolder	10	equipped with tool kit and helmet, must have 16m climbing licence, according to the Professional Association's Institute for Industrial Safety
Steelhands	10	equipped with tool kit and helmet, must have a 2,5m climbing licence according to Professional Association's Institute for Industrial Safety
Forklift incl. operators	3	Lifting capacity at least 4to Operating height at least 4m



# MEGAFORCE

The Stage Company

## Build-up day 3

	Quantity	Notice
Headcrew	6	
Scaffolder	10	equipped with tool kit and helmet, must have 16m climbing licence, according to the Professional Association's Institute for Industrial Safety
Steelhands	10	equipped with tool kit and helmet, must have a 2,5m climbing licence according to Professional Association's Institute for Industrial Safety
Forklift incl. operators	3	Lifting capacity at least 4to Operating height at least 4m

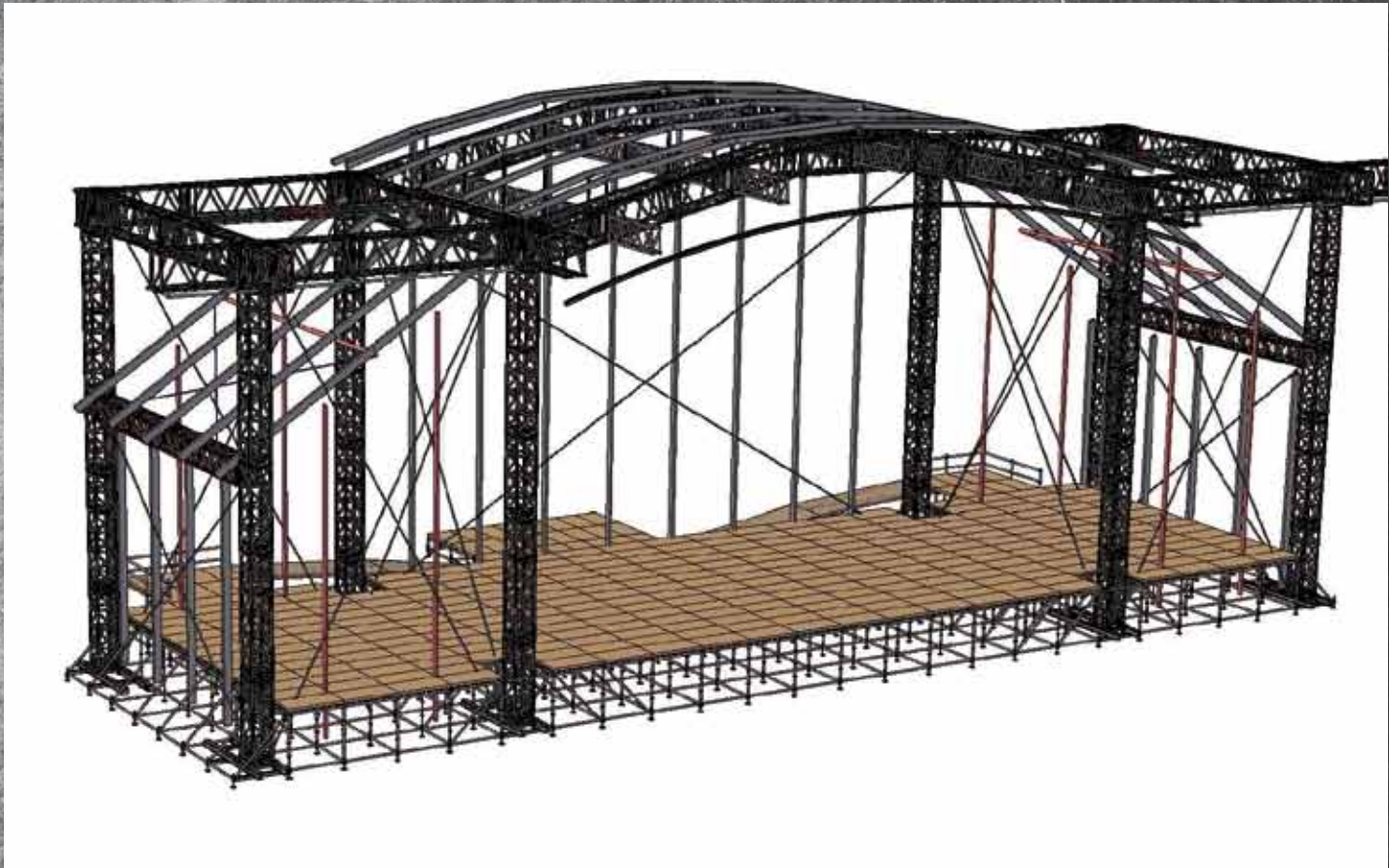
## Dismantling day 1

	Quantity	Notice
Headcrew	6	
Scaffolder	10	equipped with tool kit and helmet, must have 16m climbing licence, according to the Professional Association's Institute for Industrial Safety
Steelhands	10	equipped with tool kit and helmet, must have a 2,5m climbing licence according to Professional Association's Institute for Industrial Safety
Forklift incl. operators	3	Lifting capacity at least 4to Operating height at least 4m
Crane incl. operators	1	Lifting capacity at least 80to Operating height at least 20m

## Dismantling day 2

	Quantity	Notice
Headcrew	6	
Scaffolder	10	equipped with tool kit and helmet, must have 16m climbing licence, according to the Professional Association's Institute for Industrial Safety
Steelhands	10	equipped with tool kit and helmet, must have a 2,5m climbing licence according to Professional Association's Institute for Industrial Safety
Forklift incl. operators	3	Lifting capacity at least 4to Operating height at least 4m

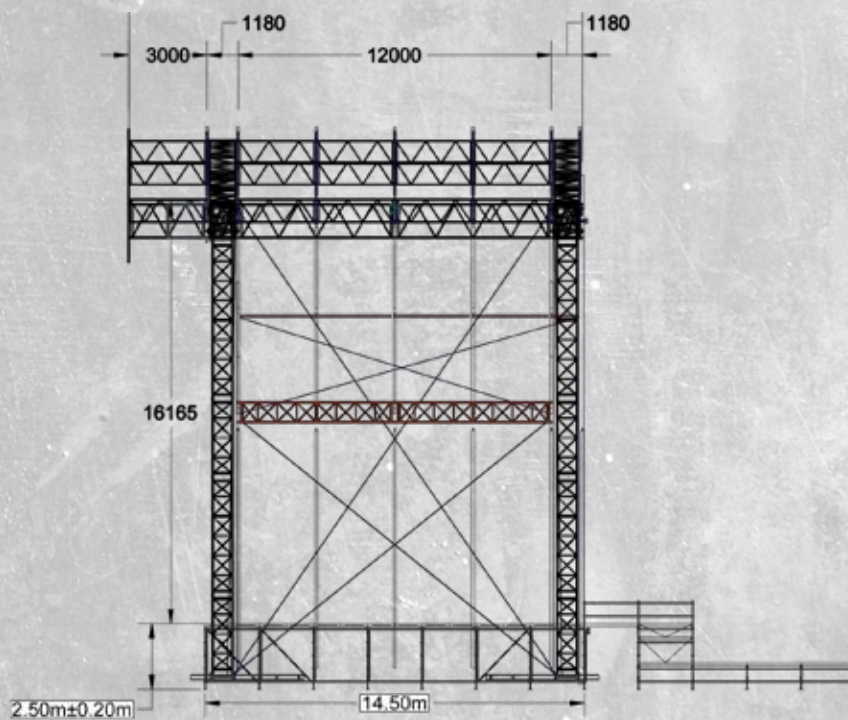
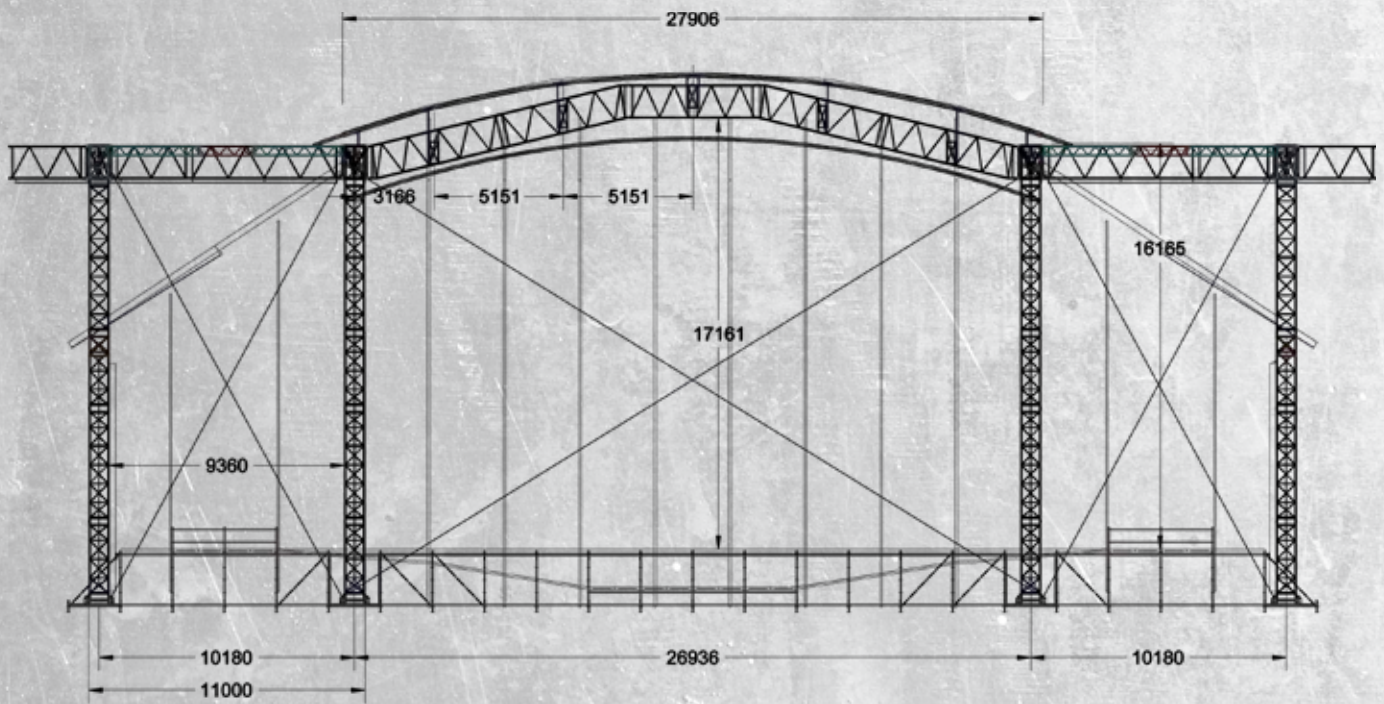






# MEGAFORCE

The Stage Company







Interested? Give us a call!

# MEGAFORCE

The Stage Company

**MEGAFORCE Bühnen- und Veranstaltungstechnik**

Jöhlinger Straße 118

D – 76356 Weingarten

Tel.: 0049 - 7244 - 72 02 0

Fax: 0049 - 7244 - 72 02 22

info@megaforce.de

[[WWW.MEGAFORCE.DE](http://WWW.MEGAFORCE.DE)]

